

CABINETS AND CLOSET DESIGNS



BARS • MEDIA UNITS • CNC DESIGNS

416-845-7265

ALTIMAKITCHENSANDCLOSETS.COM

OUR SERVICES

Reach In Closets

Walk In Closets

Foyer Closets

Mudrooms

Bedroom Wardrobes

Home Offices

Laundry

Garage Cabinets

Kitchen Pantry

Brampton Location: 11 Edvac Drive, Unit #13-17, Brampton, Ontario, L6S 5W5; Ph – (416)-845-7265 ; (647)-402-7420

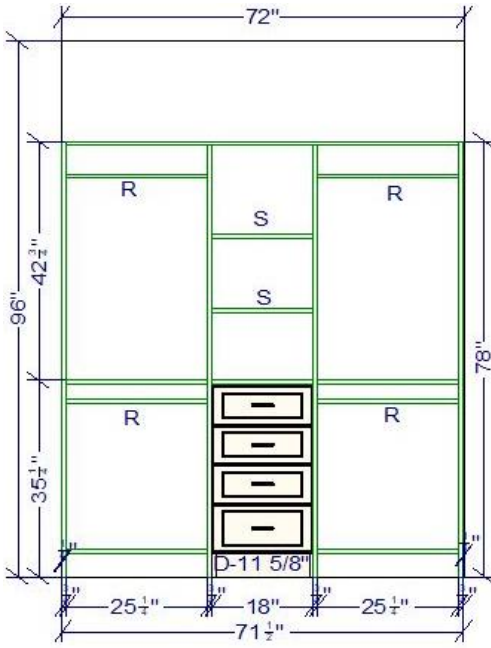
Whitby Location: Design Studio: 70 Twin Streams Rd, Whitby ON L1P 0A4; Ph - (437)-992-9296

Milton Location: Office: 471 Harkin Place, Milton ON L9T 7Y1; Ph - (289)-400-4307

REACH-IN CLOSETS – FOLDING DOORS

REACH IN CLOSET (5' – 6')

Option 01

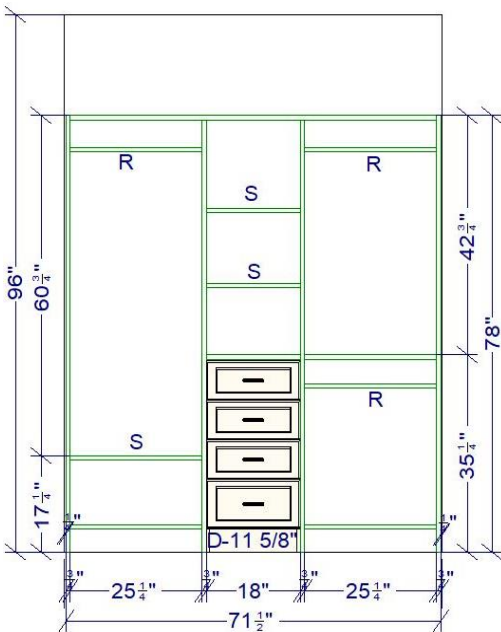


2D VIEW



3D VIEW

Option 02



2D VIEW

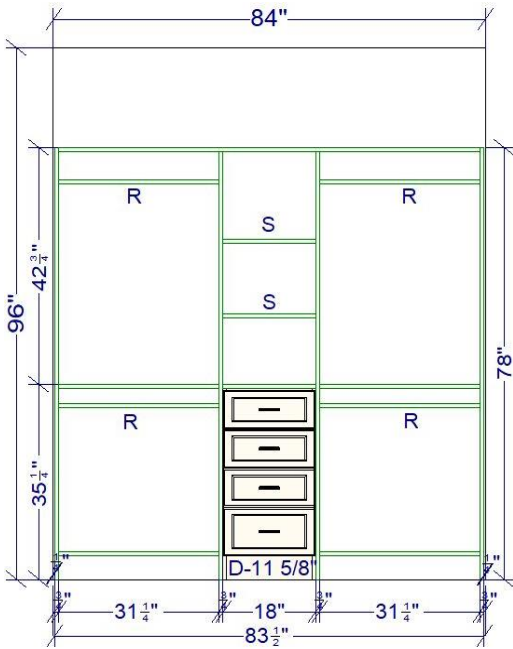


3D VIEW

REACH-IN CLOSETS – FOLDING DOORS

REACH IN CLOSET (6' – 7')

Option 01

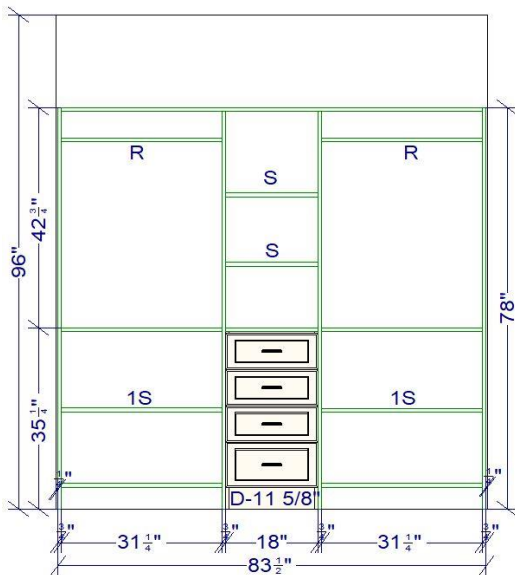


2D VIEW



3D VIEW

Option 02



2D VIEW

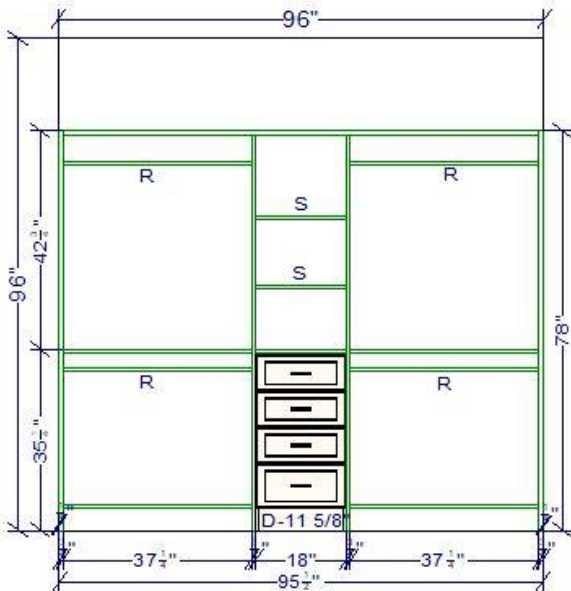


3D VIEW

REACH-IN CLOSETS – FOLDING DOORS

REACH IN CLOSET (7' – 8')

Option 01

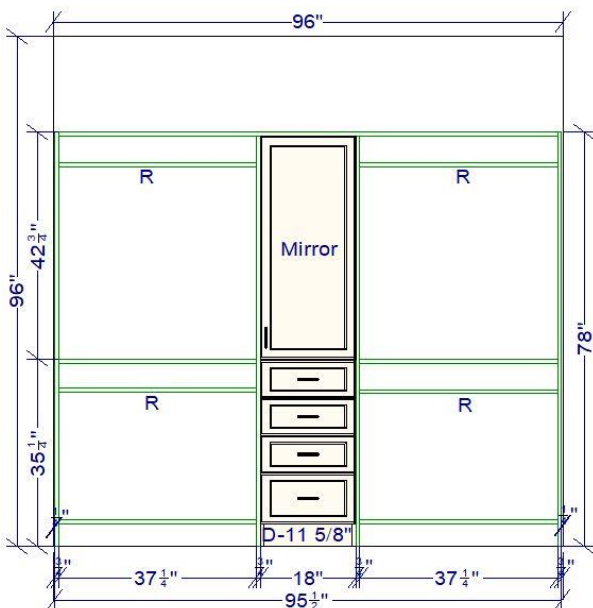


2D VIEW



3D VIEW

Option 02 with openable half mirror



2D VIEW

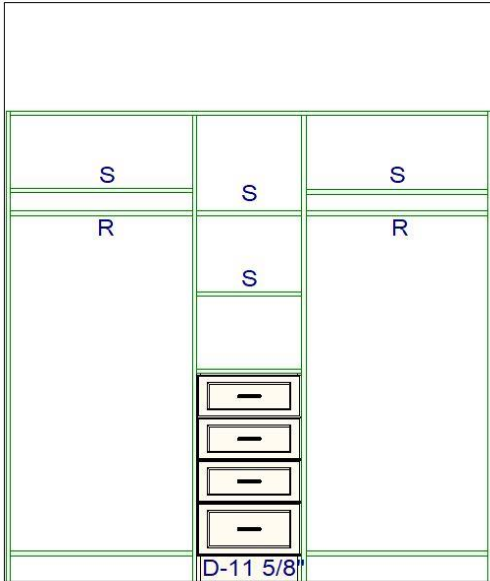


3D VIEW

REACH-IN CLOSETS – FOLDING DOORS

REACH IN CLOSET (OTHER OPTIONS – ALL SIZES)

Option 01

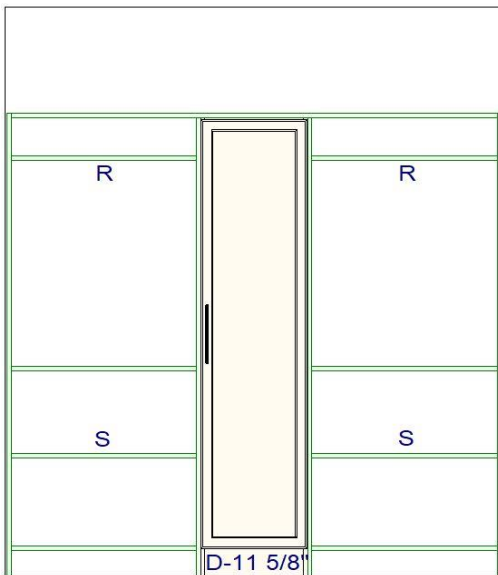


2D VIEW



3D VIEW

Option 02 with openable full-size mirror



2D VIEW

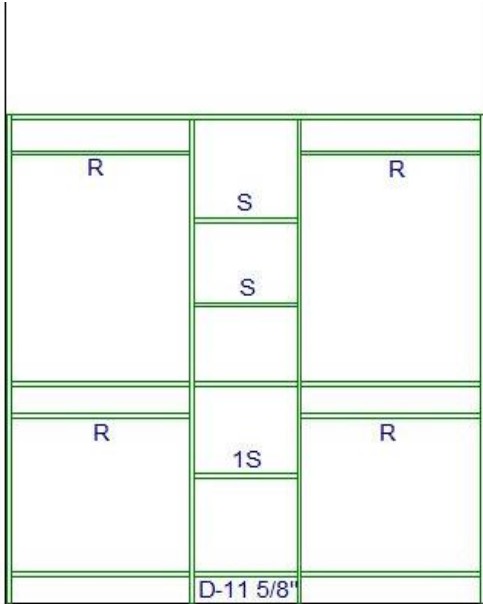


3D VIEW

REACH-IN CLOSETS – FOLDING DOORS

REACH IN CLOSET (OTHER OPTIONS)

Option 03

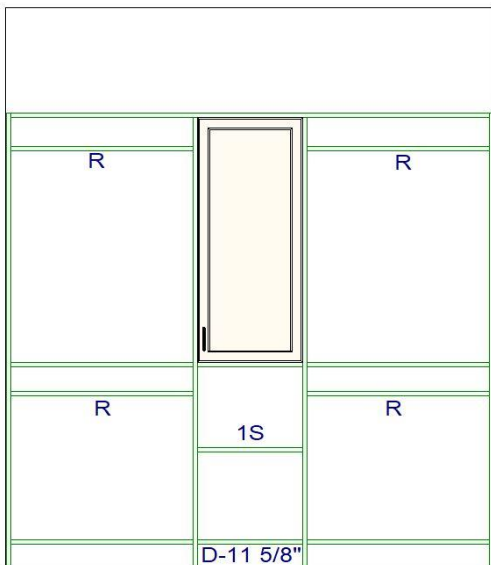


2D VIEW



3D VIEW

Option 04



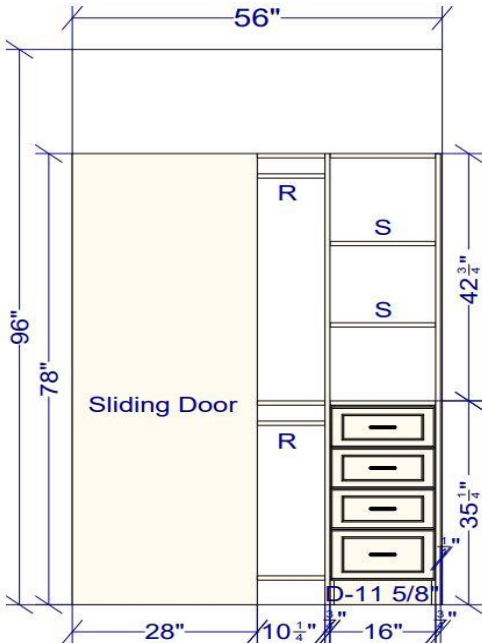
2D VIEW



3D VIEW

REACH-IN CLOSETS – SLIDING DOORS

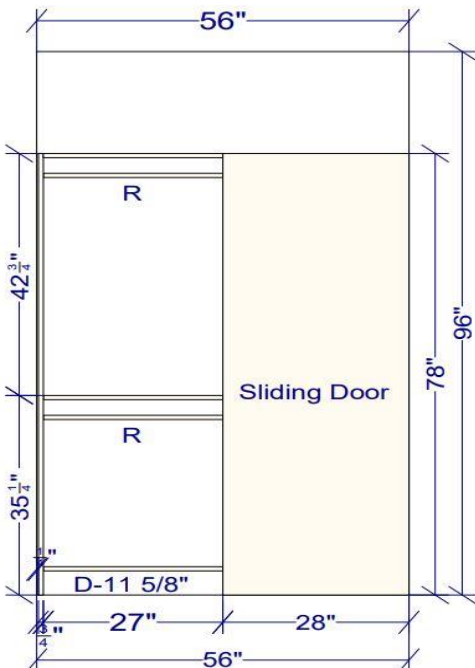
REACH IN CLOSET (SLIDING DOORS)



OPTION 01-RIGHT SIDE 2D VIEW



3D VIEW



OPTION 01-LEFT SIDE 2D VIEW

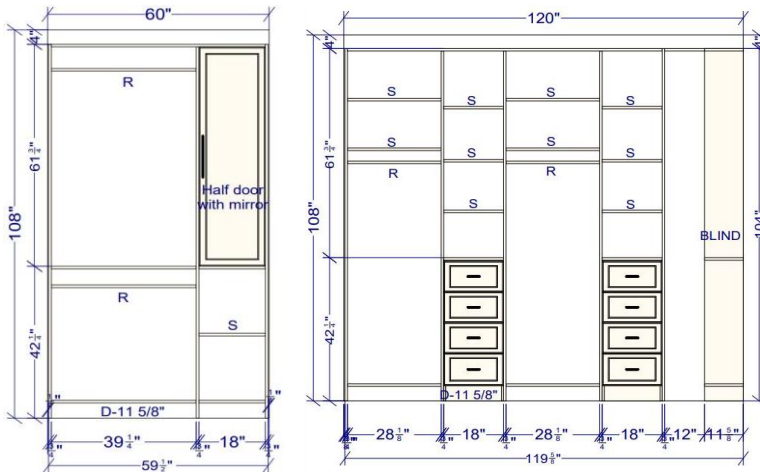


3D VIEW

L-SHAPE WALK IN CLOSETS

L SHAPE CLOSET (Front wall 5' – Side wall 10')

Option 01



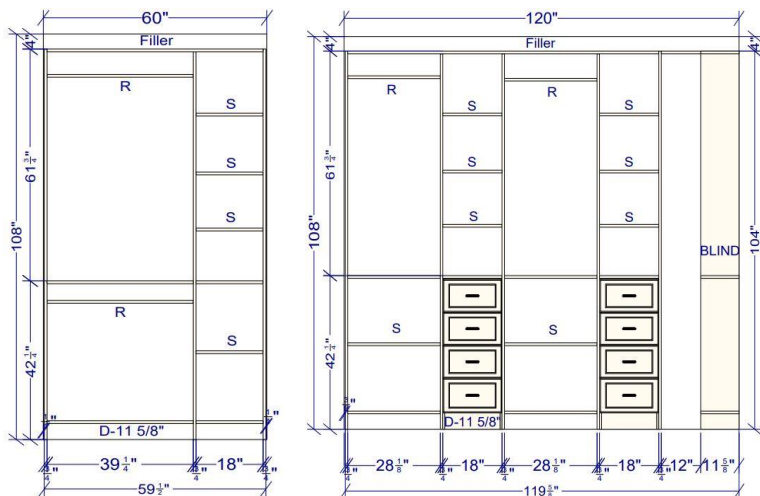
2D VIEW



3D VIEW

L SHAPE CLOSET (Front wall 5' – Side wall 10')

Option 02



2D VIEW

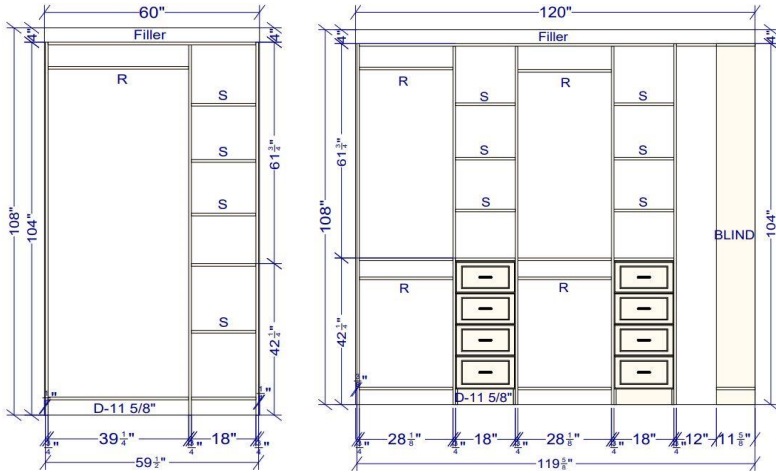


3D VIEW

L-SHAPE WALK IN CLOSETS

L SHAPE CLOSET (Front wall 5' – Side wall 10')

Option 03



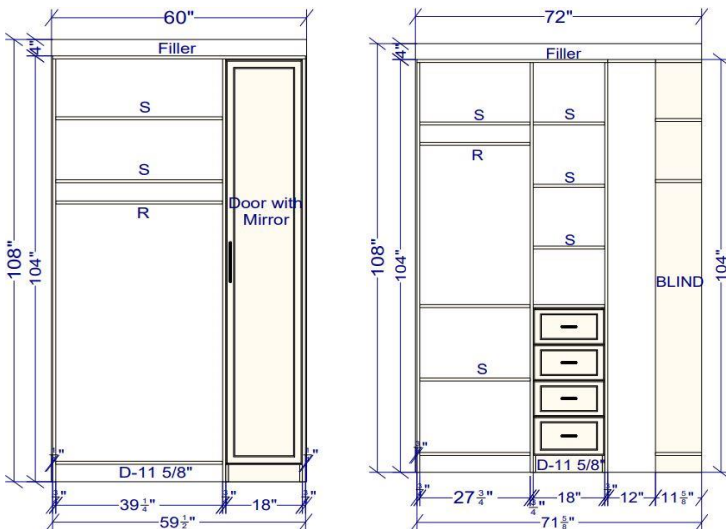
2D VIEW



3D VIEW

L SHAPE CLOSET (Front wall 5' – Side wall 6')

Option 01



2D VIEW

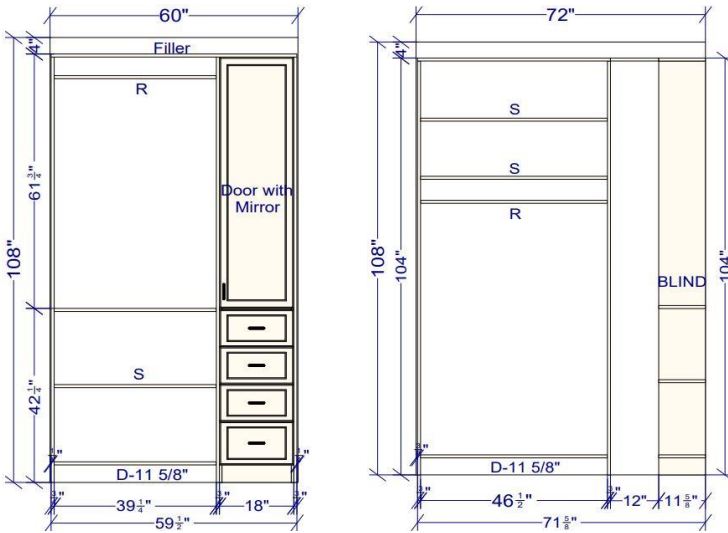


3D VIEW

L-SHAPE WALK IN CLOSETS

L SHAPE CLOSET (Front wall 5' – Side wall 6')

Option 02



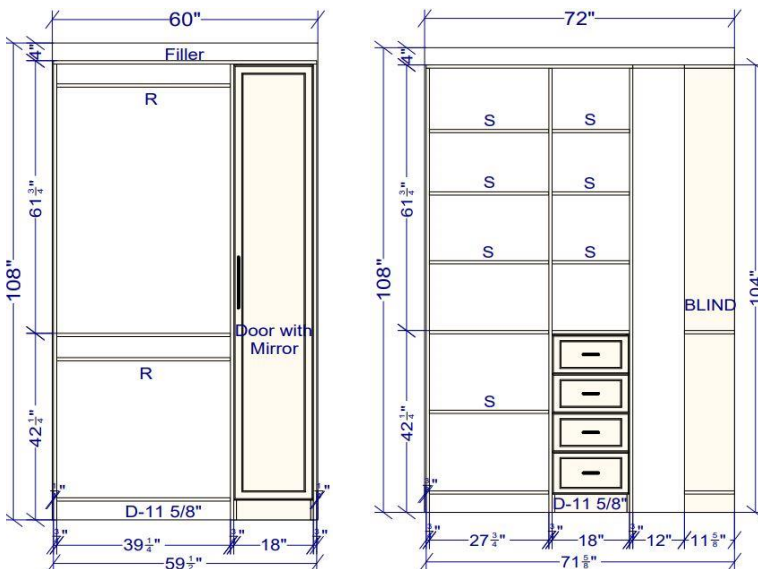
2D VIEW



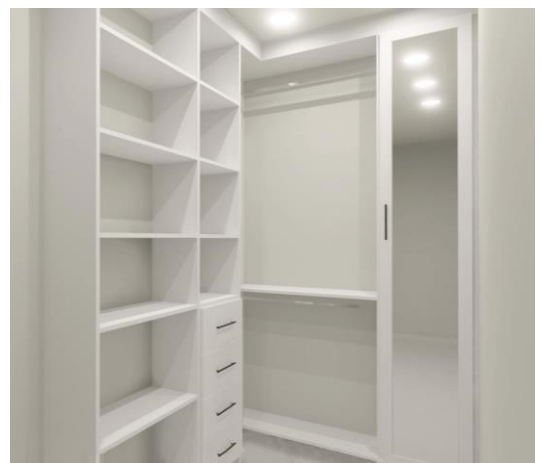
3D VIEW

L SHAPE CLOSET (Front wall 5' – Side wall 6')

Option 03



2D VIEW

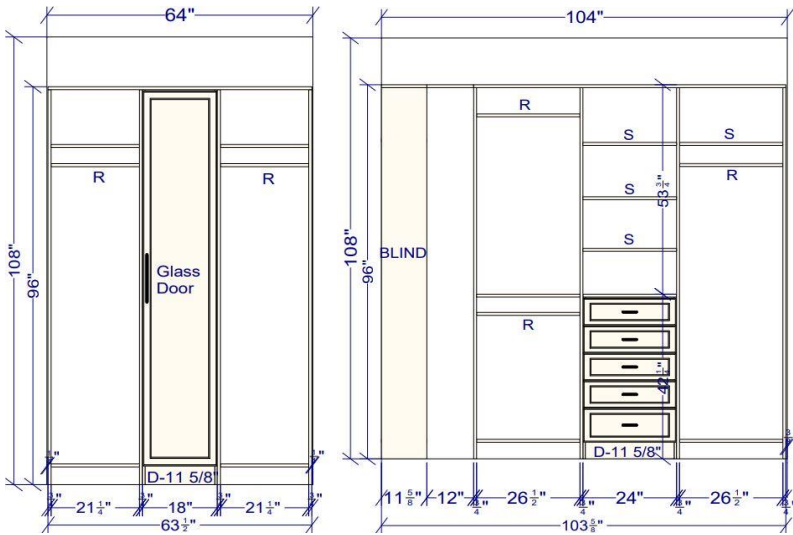


3D VIEW

L-SHAPE WALK IN CLOSETS

L SHAPE CLOSET (Front wall 5' – Side wall 8')

Option 01



2D VIEW

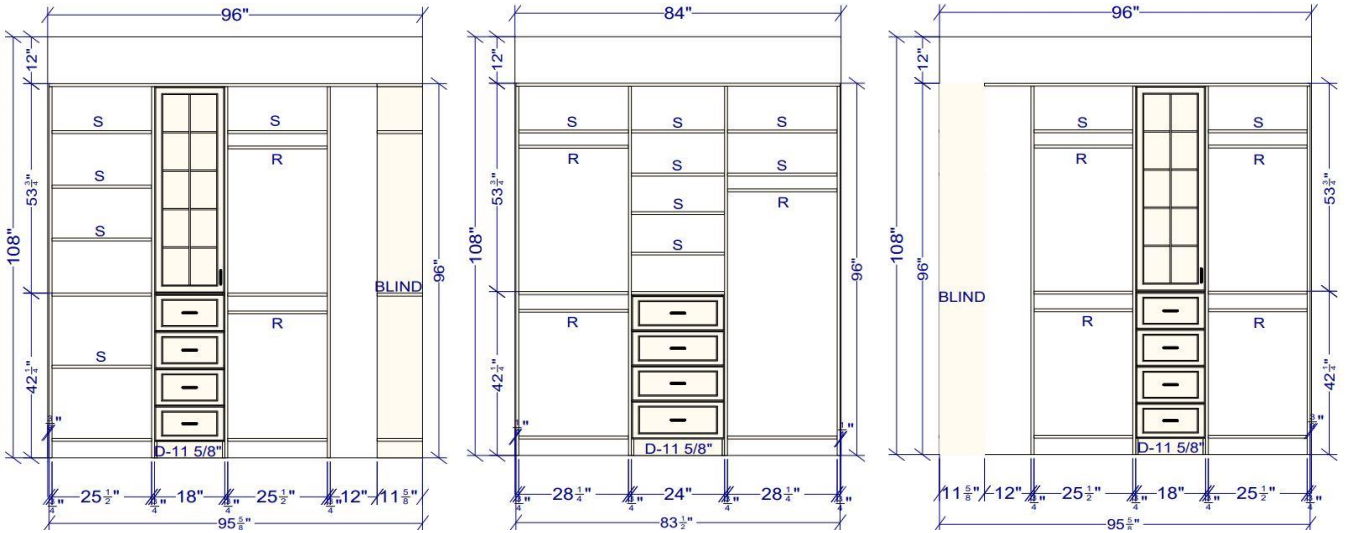


3D VIEW

U-SHAPE WALK IN CLOSETS

U SHAPE CLOSET (Front wall - 7' X Side walls - 8')

Option 01 2D View

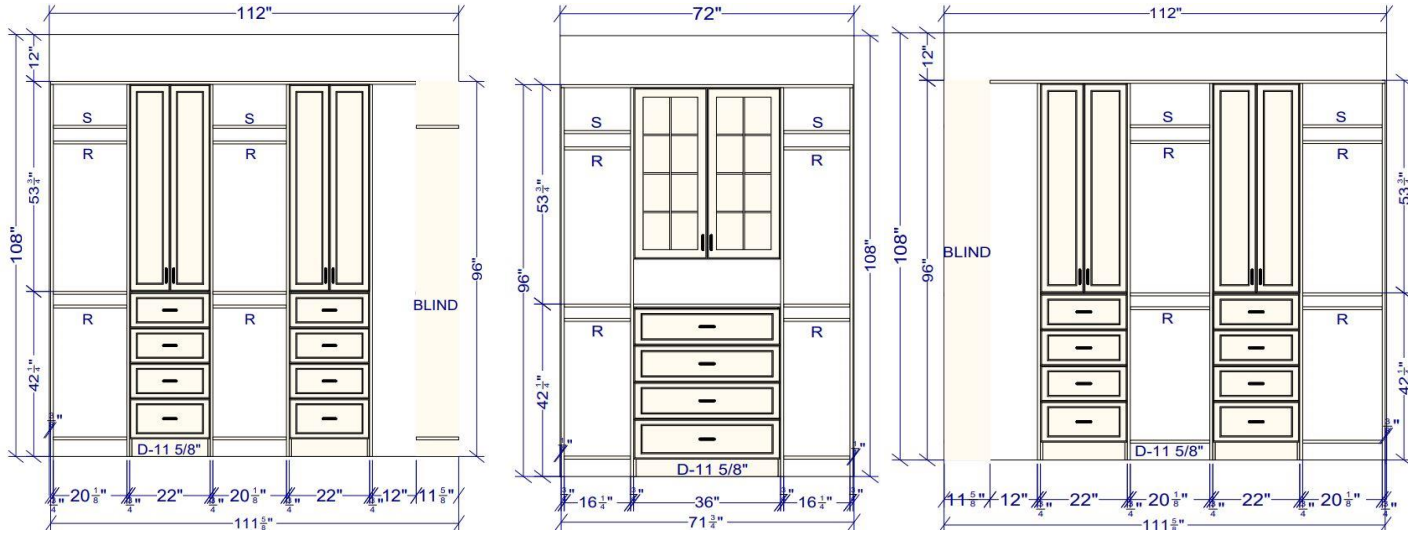


3D View

U-SHAPE WALK IN CLOSETS

U SHAPE CLOSET (Front wall – 6' X Side walls – 9')

Option 02 2D View

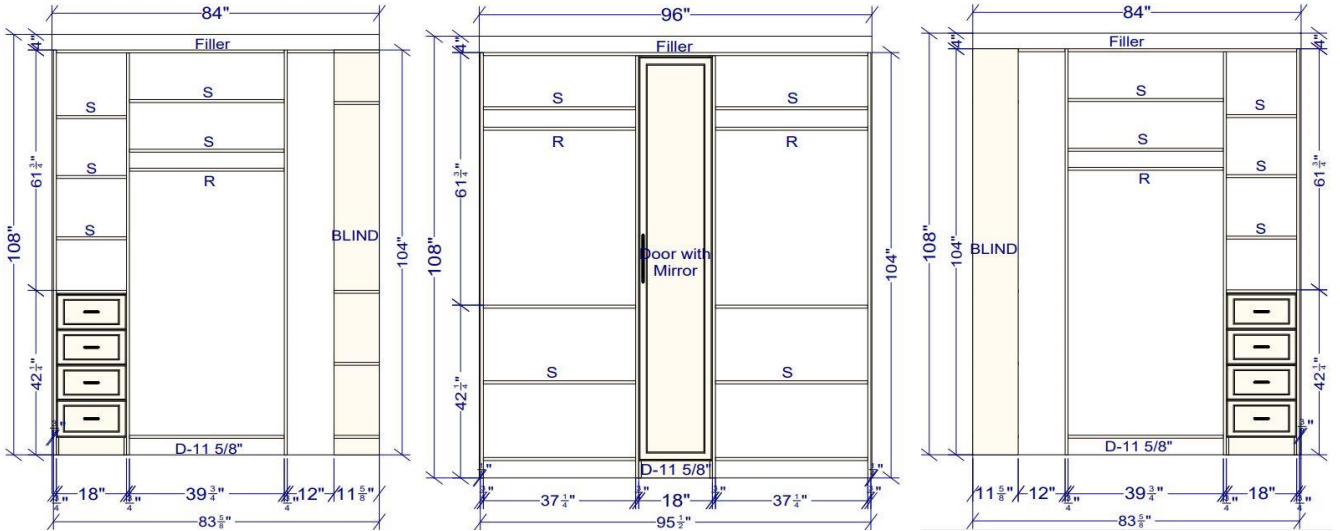


3D View

U-SHAPE WALK IN CLOSETS

U SHAPE CLOSET (Front wall - 8' X Side walls - 7')

Option 03 2D View

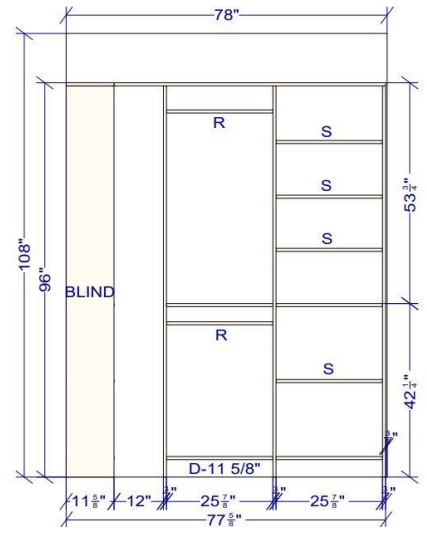
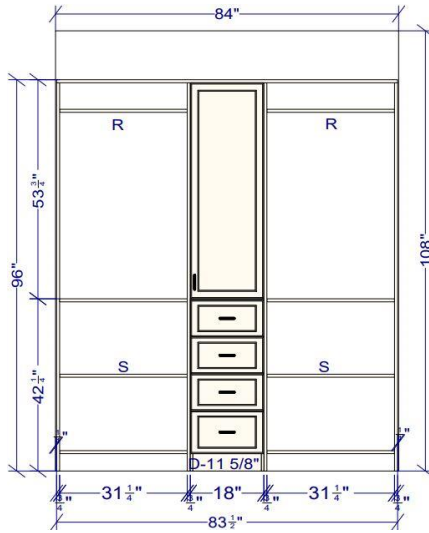
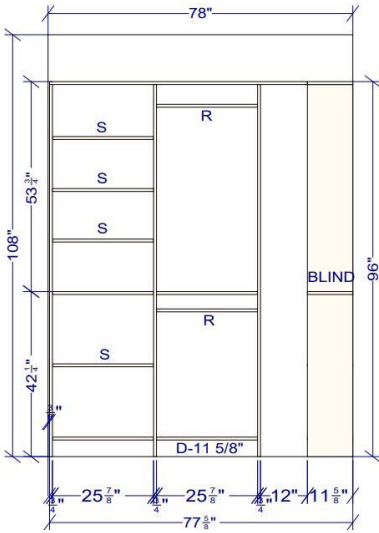


3D View

U-SHAPE WALK IN CLOSETS

U SHAPE CLOSET (Front wall - 7' X Side walls - 6.5')

Option 04 2D View

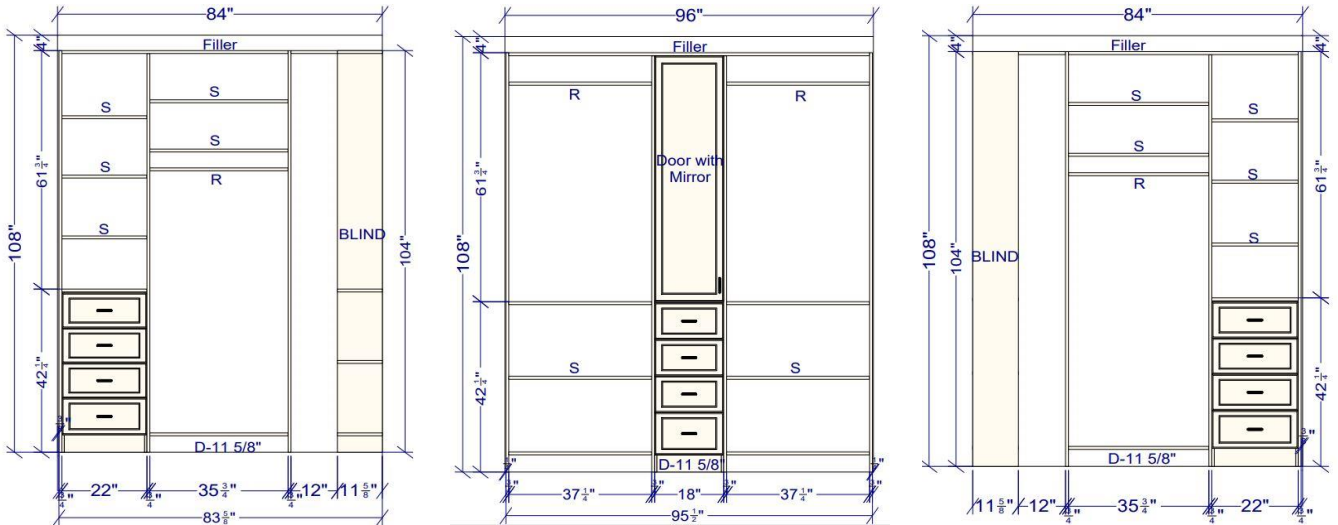


3D View

U-SHAPE WALK IN CLOSETS

U SHAPE CLOSET (Front wall - 8' X Side walls - 7')

Option 05 2D View



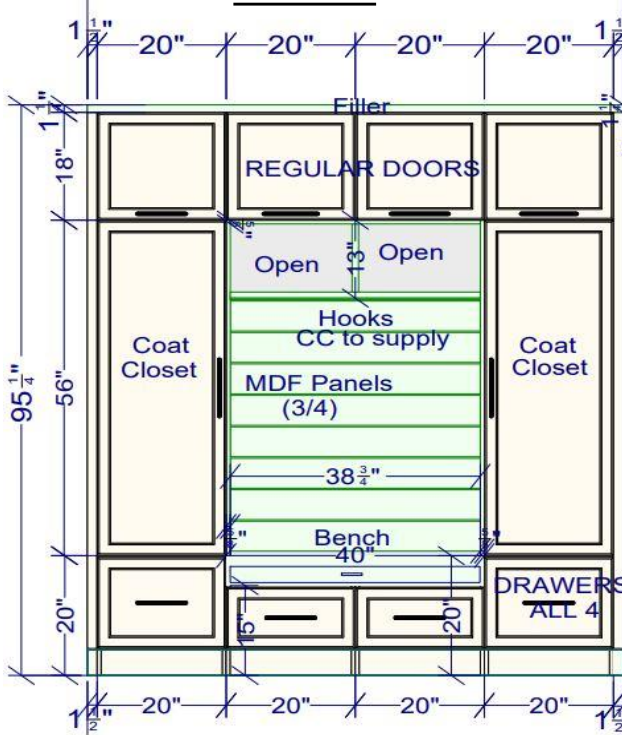
3D View

FOYER CLOSETS

Foyer Closet (7')

Option 01

2D View



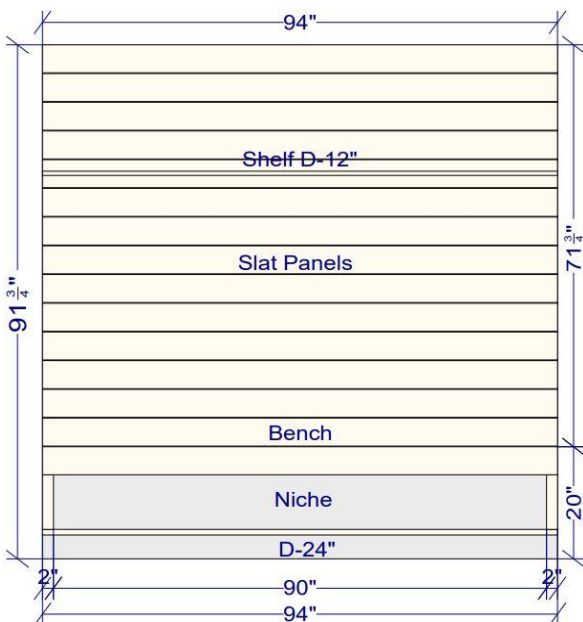
3D View



Foyer Closet (8')

Option 02

2D View



3D View

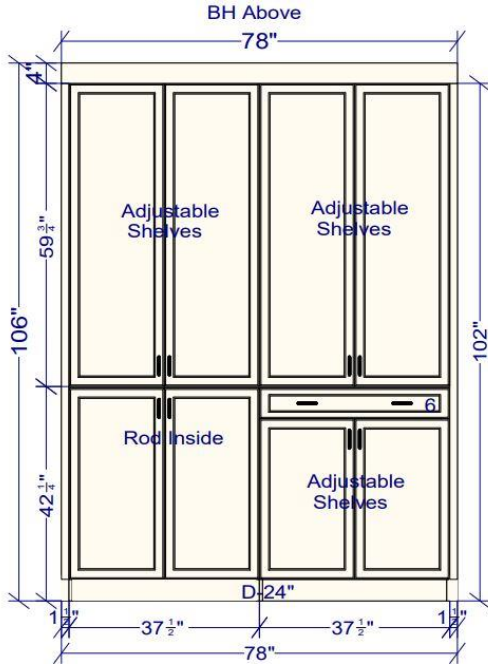


MUDROOM

Foyer Closet (6 1/2')

Option 01

2D View



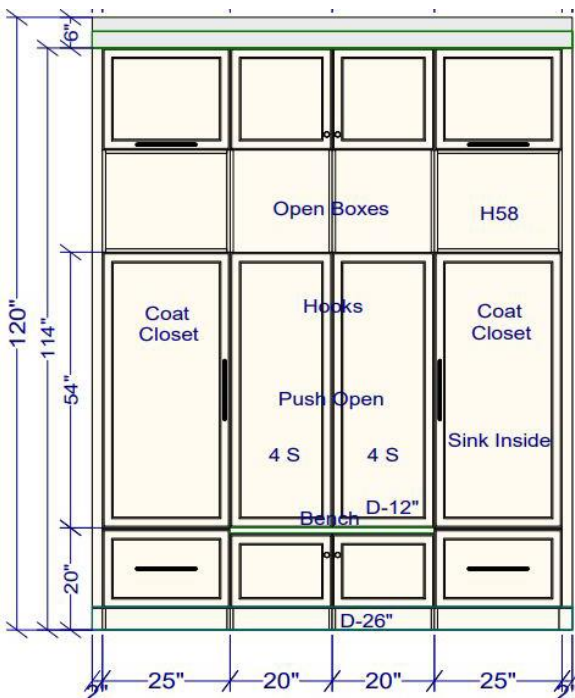
3D View



Foyer Closet (9')

Option 02

2D View



3D View

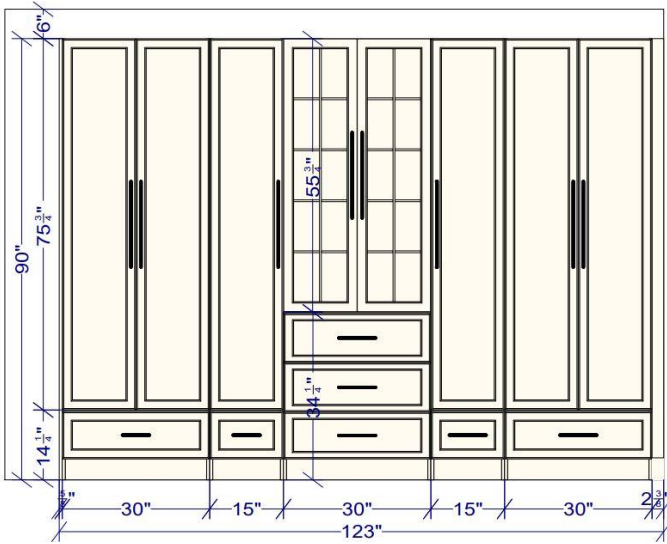


BEDROOM WARDROBES

Bedroom Wardrobe (10 ¼')

Option 01

2D View



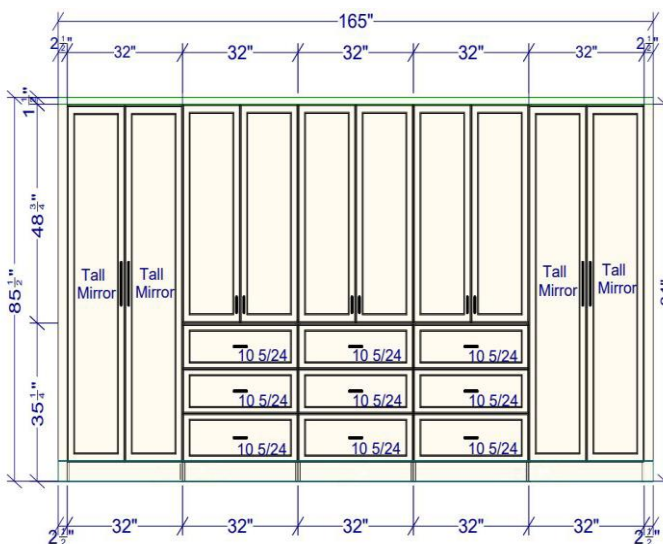
3D View



Bedroom Wardrobe (13 ¾')

Option 02

2D View



3D View

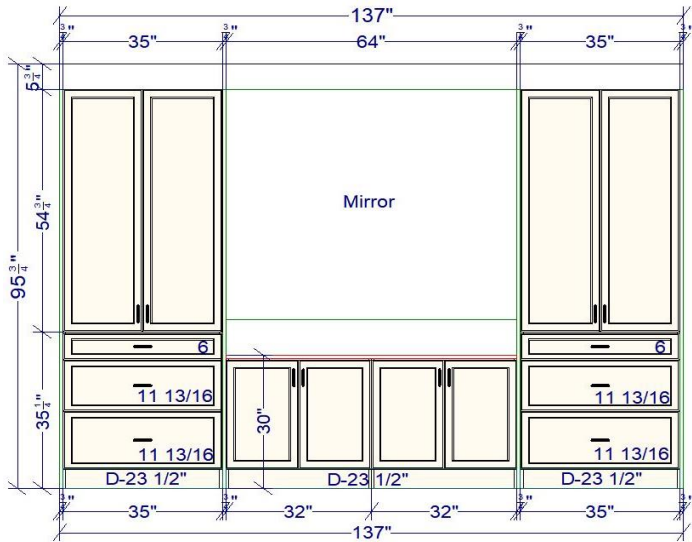


BEDROOM WARDROBES

Bedroom Wardrobe (11 1/2')

Option 03

2D View



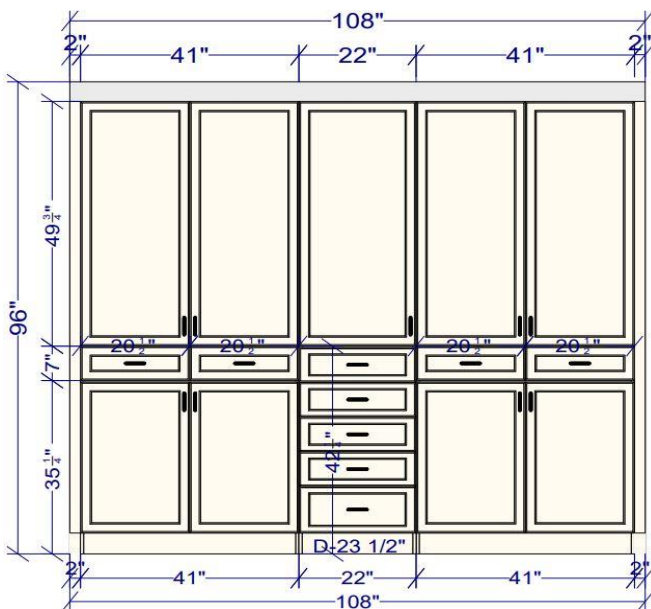
3D View



Bedroom Wardrobe (9')

Option 04

2D View



3D View

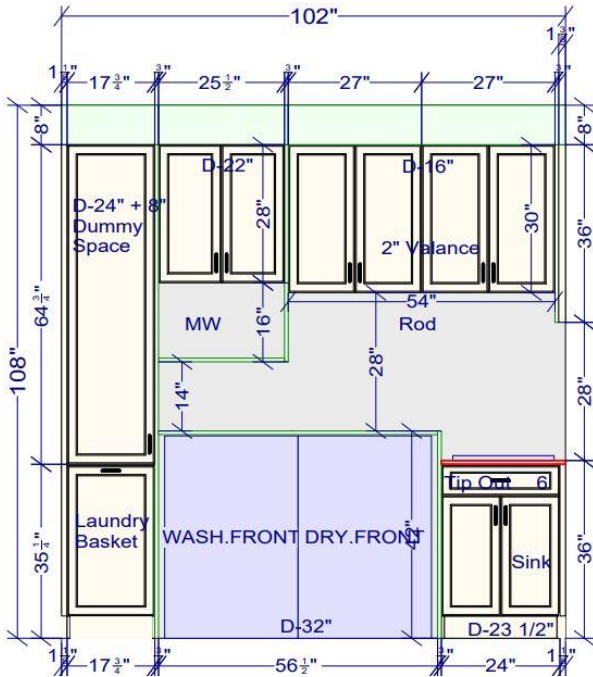


LAUNDRY

Laundry (8 1/2')

Option 01

2D View



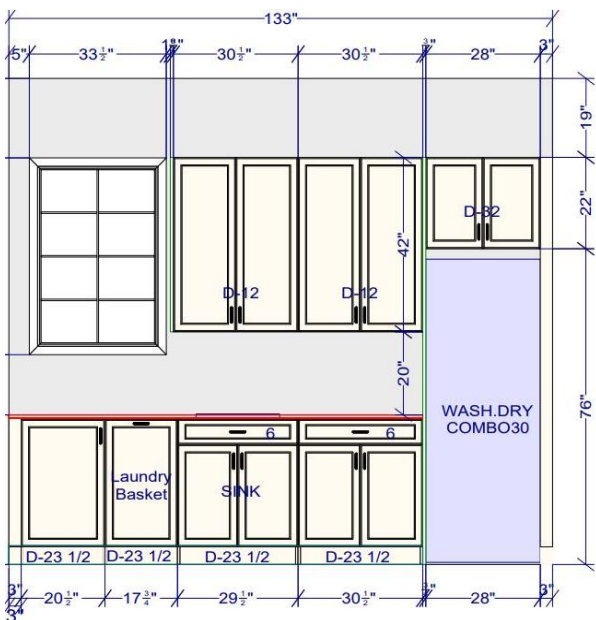
3D View



Laundry (11')

Option 02

2D View



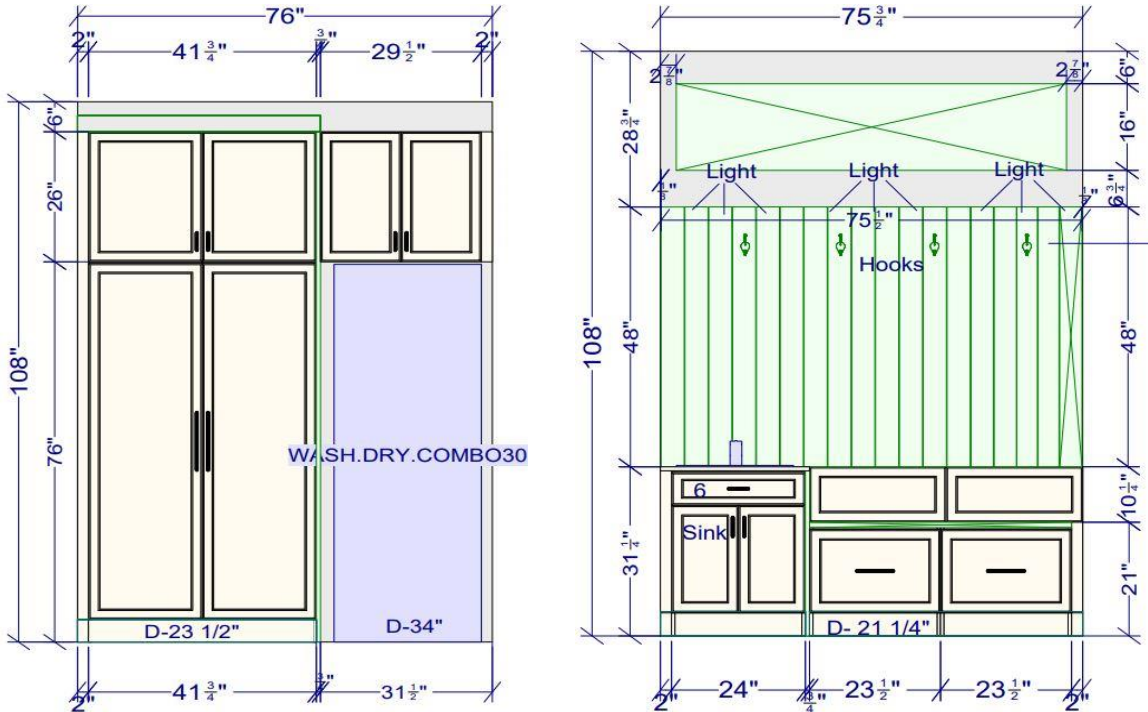
3D View



LAUNDRY

Option 03

2D View



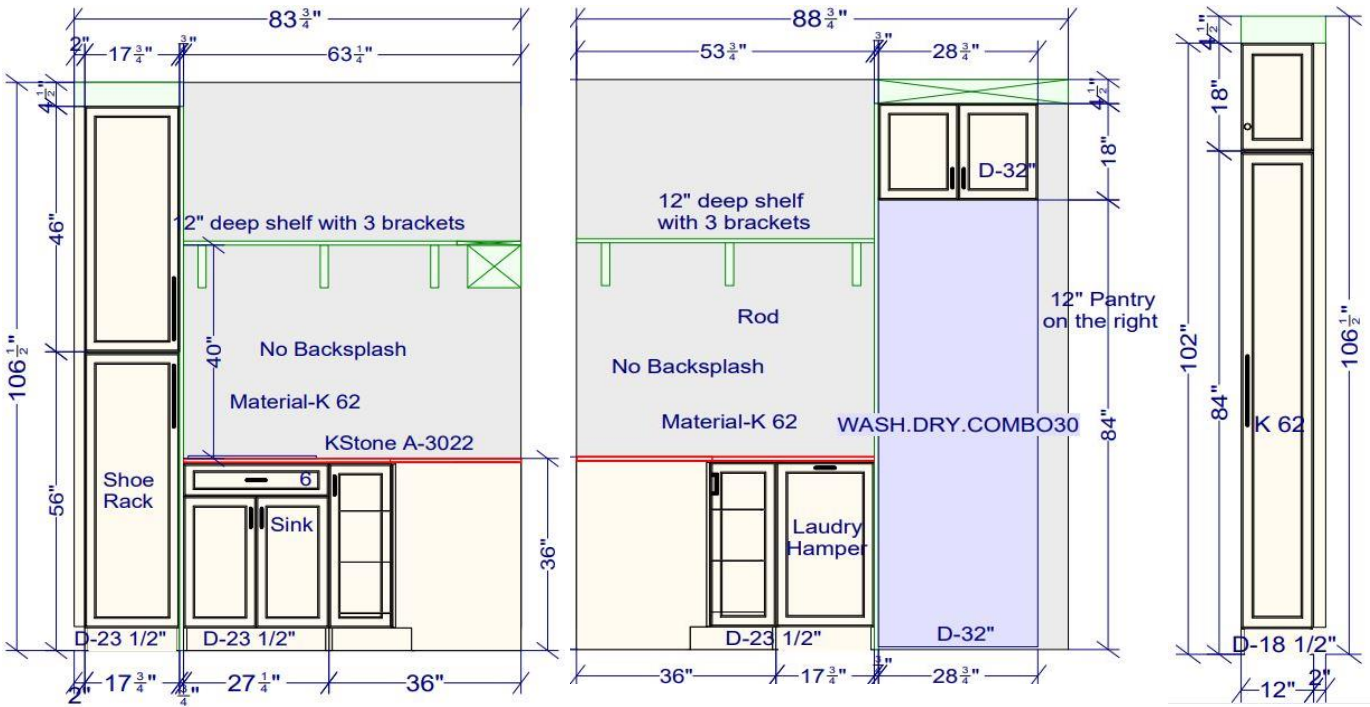
3D View



LAUNDRY

Option 04

2D View



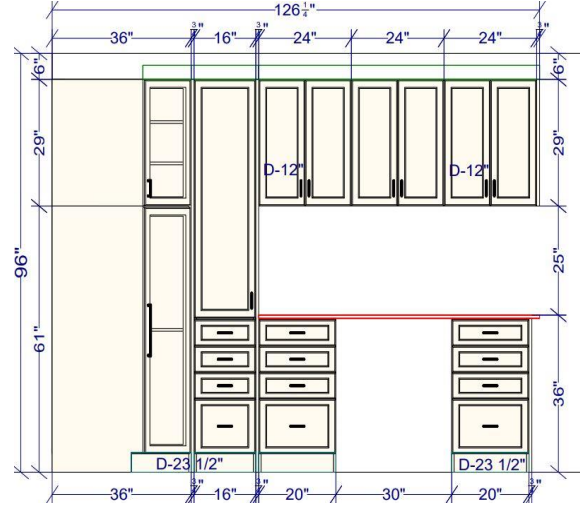
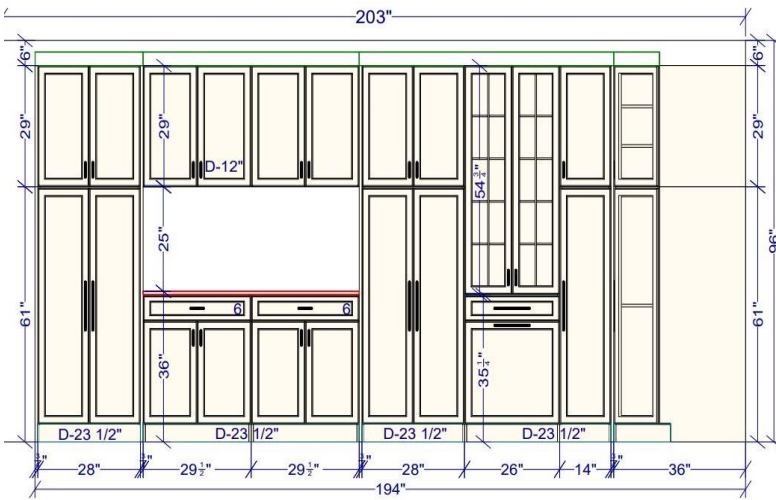
3D View



GARAGE CABINETS

Option 01

2D View



3D View

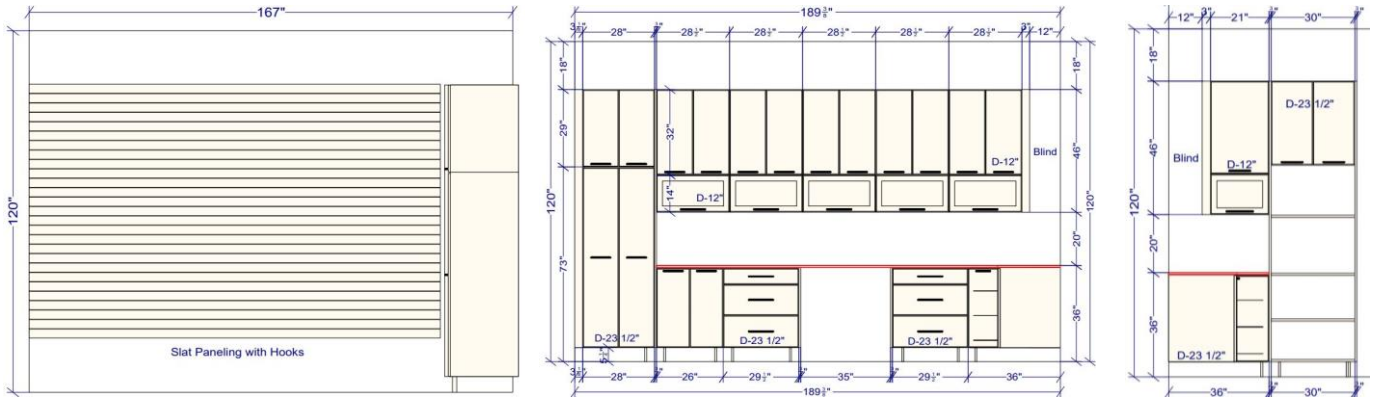


GARAGE CABINETS

Garage Cabinet

Option 02

2D View



3D View

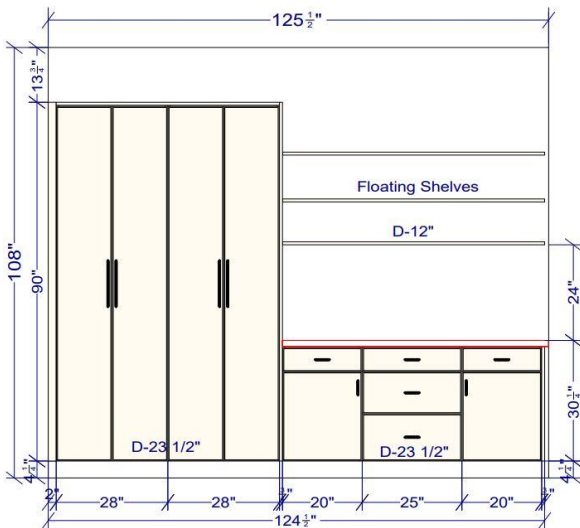


GARAGE CABINETS

Garage Cabinet

Option 03

2D View



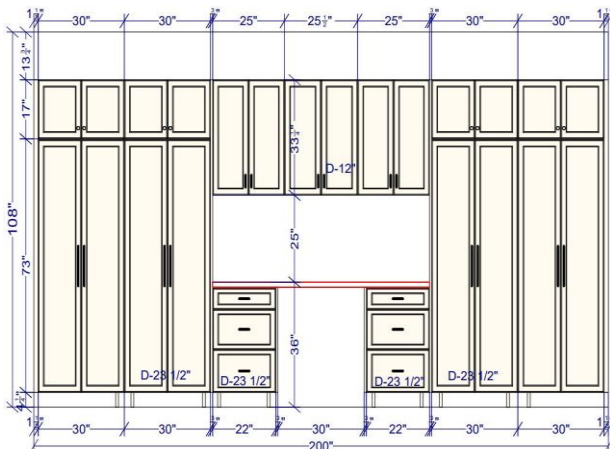
3D View



Garage Cabinet

Option 04

2D View



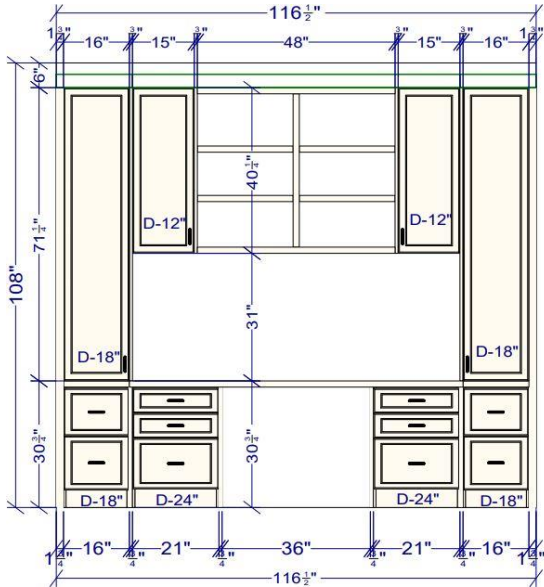
3D View



HOME OFFICES

Option 01

2D View

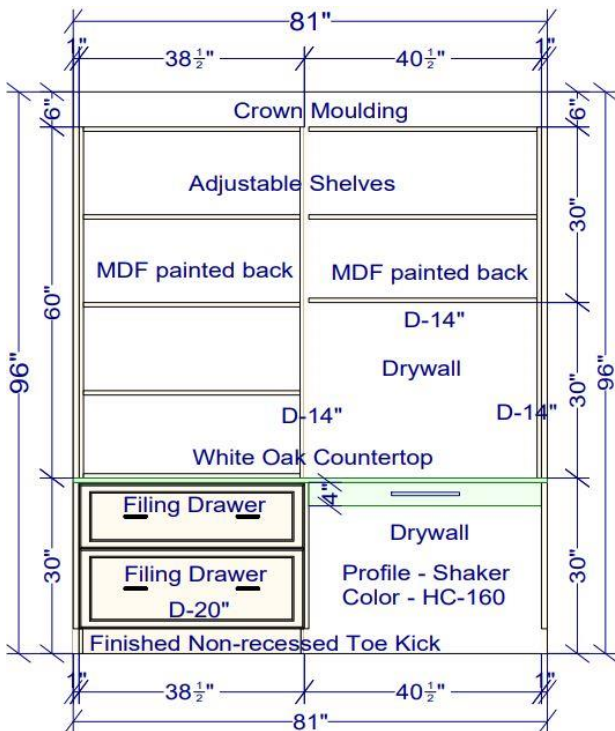


3D View



Option 02

2D View



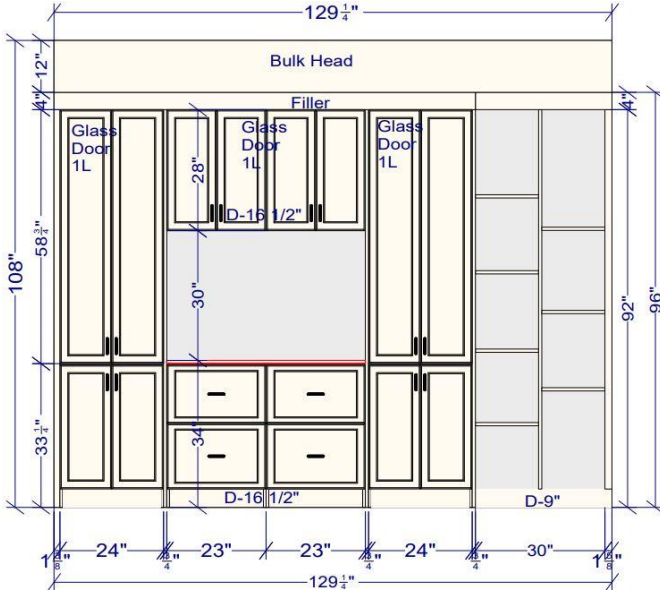
3D View



HOME OFFICES

Option 03

2D View

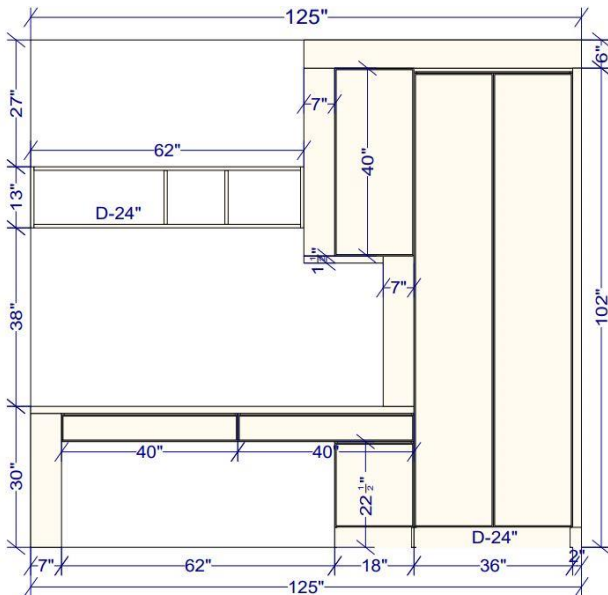


3D View



Option 04

2D View



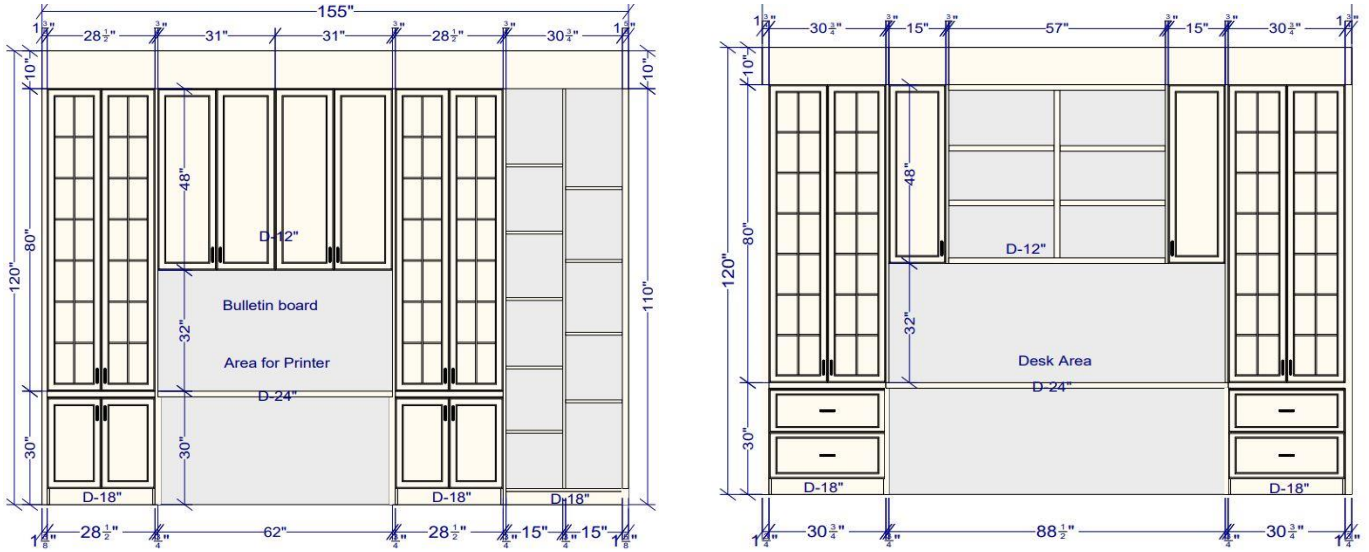
3D View



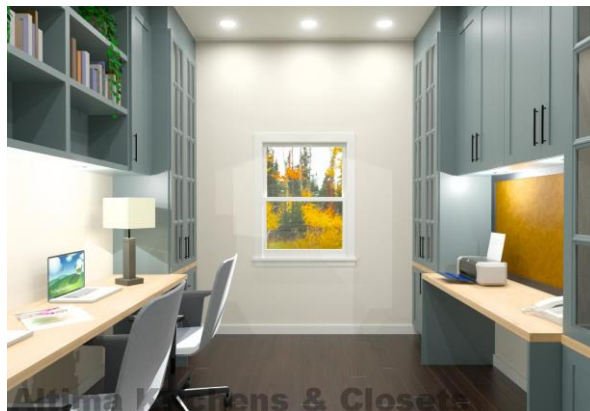
HOME OFFICES

Option 05

2D View



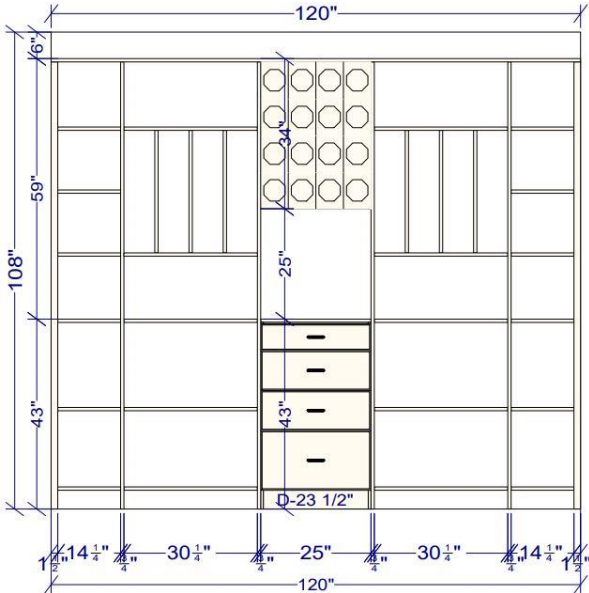
3D View



KITCHEN PANTRY

Option 01

2D View

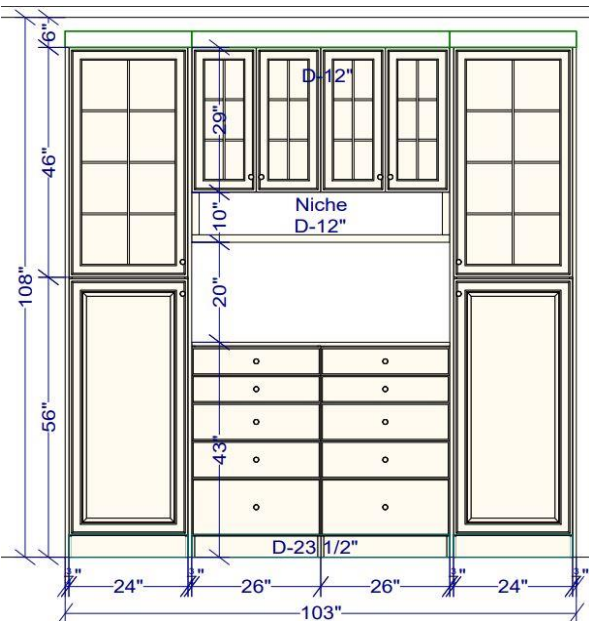


3D View



Option 02

2D View



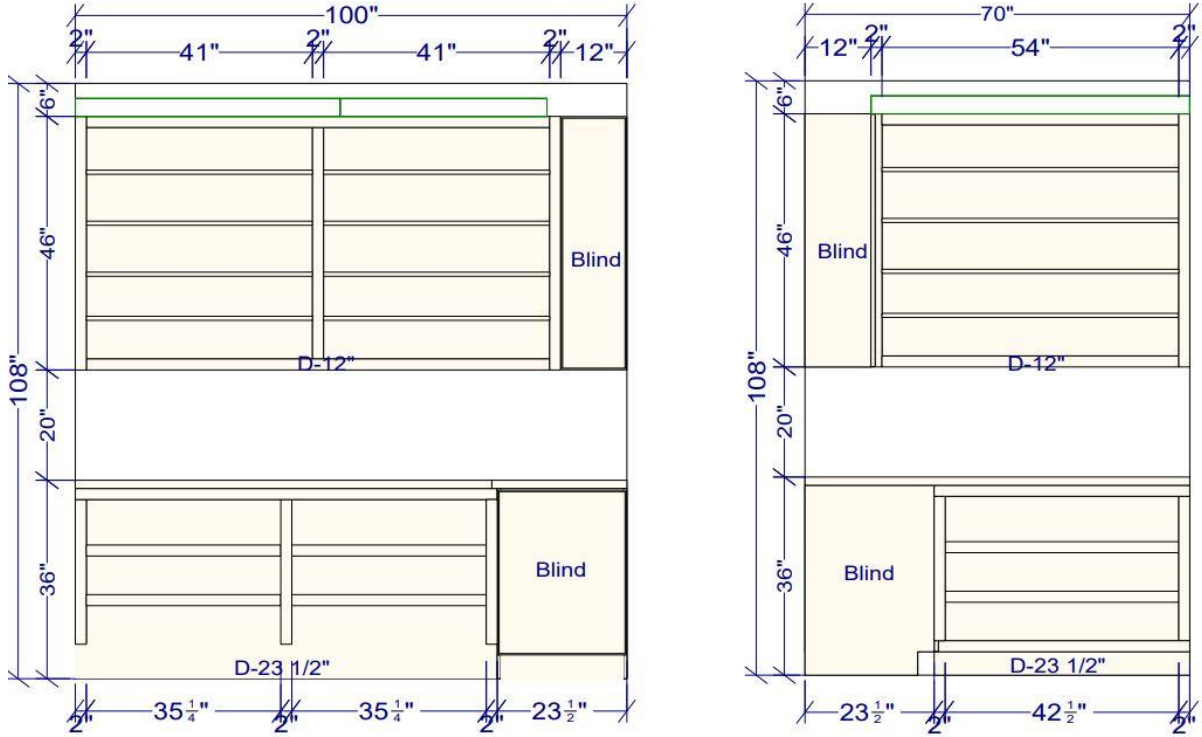
3D View



KITCHEN PANTRY

Option 03

2D View



3D View



BIG ROOM CLOSETS



BIG ROOM CLOSETS



CLOSET AND STORAGE SOLUTIONS

Side mount Belt Pull out Rack



Product Dimensions – Width: 2 ¼”, Height: 2 5/16”, Depth: 12”, 14”

Finish – Chrome, Oil-Rubbed Bronze, Satin Nickel

Number of Hooks – 7, 9

Interior Dim. Required – Depth - Frameless: Min. 12”, Min. 14”

Interior Dim. Required – Depth – With Frame: Min. 12”, Min. 14”

Material – Steel

Price - \$

Sliding Square Belt Rack



Product Dimensions – Width: 3”, Height: 2 ½”, Depth: 11 ¼” , 13 ¼”

Finish – Brass, Chrome, Matte Black, Matte Brass, Matte Chrome, Matte Nickel, Oil-Rubbed Bronze

Number of Hooks – 6

Interior Dim. Required – Depth: Min. 12”, Min. 14”

Material – Metal

Price - \$

Belt Pull out Rack



Product Dimensions – Width: 1 ¼”, Height: 1 ¾”, Depth: 13 ¾”

Finish – Chrome, Matte Black, Matte Nickel, Satin Brass

Number of Hooks – 6

Material – Aluminium

Price - \$

Decorative Oval Belt Rack



Product Dimensions – Width: 2”, Height: 2 ½”, Depth: 12” , 14”

Finish – Brass, Chrome, Matte Black, Matte Chrome, Matte Nickel, Oil-Rubbed Bronze

Number of Hooks – 7, 8

Material – Metal

Price - \$

Screw-on Belt Rack



Product Dimensions – Width: 1 7/8”, Height: 1 ¾”, Depth: 11 ¾”

Finish – Chrome

Number of Hooks – 7

Interior Dim. Required – Width - Frameless: Min. 1 7/8”

Interior Dim. Required – Width – With Frame: Min. 1 7/8”

Material – Steel

Price - \$

CLOSET AND STORAGE SOLUTIONS

Belt and Scarf Pull out Rack



Product Dimensions – Width: 3", Height: 2", Depth: 11 7/8" to 18 1/2",
13 7/8" to 21 7/8"

Finish – Chrome, Oil-Rubbed Bronze, Satin Nickel

Number of Hooks – 5, 6

Interior Dim. Required – Width - Frameless: Min. 2 13/16"

Interior Dim. Required – Width – With Frame: Min. 3 1/4"

Material – Steel

Price - \$

Sidelines deluxe Sliding Belt Rack



Product Dimensions – Height: 3 7/16", Depth: 13 3/4"

Finish – Chrome, Oil-Rubbed Bronze, Satin Chrome, Satin Nickel

Interior Dim. Required – Depth - Frameless: Min. 14"

Interior Dim. Required – Depth – With Frame: Min. 14"

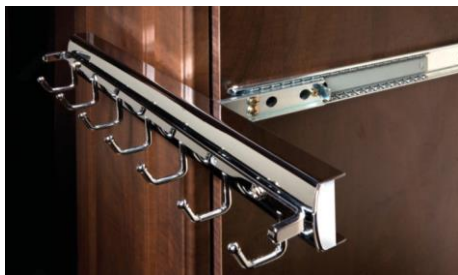
Interior Dim. Required – Width - Frameless: Min. 2 15/16"

Interior Dim. Required – Width – With Frame: Min. 2 15/16"

Material – Metal

Price - \$

Sidelines sliding and Pivoting Belt Rack



Product Dimensions – Height: 2 1/4", Depth: 13 11/16"

Finish – Chrome, Oil-Rubbed Bronze, Satin Chrome, Satin Nickel

Number of Hooks – 7

Interior Dim. Required – Depth - Frameless: Min. 14"

Interior Dim. Required – Depth – With Frame: Min. 13 11/16"

Interior Dim. Required – Width - Frameless: Min. 2 15/32"

Interior Dim. Required – Width – With Frame: Min. 2 15/32"

Material – Metal

Price - \$

Sidelines wall Mounted Belt Rack



Product Dimensions – Width: 1 1/2", Height: 1 9/16", Depth: 13 1/2"

Finish – Chrome

Number of Hooks – 7

Interior Dim. Required – Depth - Frameless: Min. 14"

Interior Dim. Required – Depth – With Frame: Min. 13 15/32"

Interior Dim. Required – Width - Frameless: Min. 1 15/32"

Interior Dim. Required – Width – With Frame: Min. 1 15/32"

Material – Metal

Price - \$

CLOSET AND STORAGE SOLUTIONS



Sidelines automatic Belt Rack

Product Dimensions – Width: 2 1/8", Height: 2 3/16", Depth: 13 1/2"

Finish – Chrome, Oil-Rubbed Bronze, Satin Nickel

Number of Hooks – 7

Material – Metal

Price - \$



Top-Mounted Sliding Belt Rack

Product Dimensions – Width – 4 1/2", Height: 3 3/8", Depth: 13 7/8"

Finish – Black

Material – Wood

Price - \$



Belt Rack

Product Dimensions – Width: 2 1/2", Height: 2", Depth: 14"

Finish – Aluminium, Brown

Number of Hooks – 6

Material – Metal

Price - \$



Tie and Belt Rack

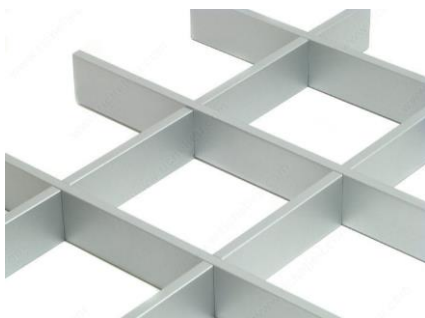
Product Dimensions – Width: 6", Height: 5", Depth: 14"

Finish – Chrome

Number of Hooks – 20

Material – Metal

Price - \$



Wood Partition for Drawers

Interior Dimensions Required – Depth: Min 21 3/4"

Interior Dimensions Required – Width: 30" , 36"

Product Dimensions – Height: 2"

Finish – Brown, Gray

Material – Wood

Price - \$

CLOSET AND STORAGE SOLUTIONS



Designer Valet Rod

Product Dimensions – Width: 1 ¼”, Height: 1 1/16”, Depth: 12”, 14”

Finish – Chrome, Oil-Rubbed Bronze, Satin Nickel

Load Capacity – 20lb

Application – Pants, Skirts, Jackets, Dresses, Shirts

Material – Steel

Price - \$



Pull-Out Wardrobe Lift

Product Dimensions – Height: 35 1/16”, Width: 17 ¾” to 23 5/8”,

23 5/8” to 32 11/16”, 24 ¾” to 40 1/8”,

32 11/16” to 45 9/32”, 30 5/16” to 47 ¼”

Finish – Black and Aluminium, Black and Chrome

Load Capacity – 10 kg

Application – Jackets, Dresses, Shirts

Material – ABS

Price - \$



Pull-Down Closet Rod

Product Dimensions – Width: 26” to 35”, Depth: 4”

Finish – Oil Rubbed Bronze

Load Capacity – 25 lb

Interior Dimensions Required – Depth: Min. 14”

Interior Dimensions Required – Height: Min 33”

Application – Pants, Dresses, Shirts

Material – Metal, Polymer

Price - \$



Central and Adjustable Pull-Out Wardrobe Lift

Product Dimensions – Width: 25 9/16” to 45 ¼”, Height: 33”

Finish – Aluminium

Load Capacity – 10 kg

Application – Jackets, Dresses, Shirts

Material – ABS

Price - \$

CLOSET AND STORAGE SOLUTIONS



Multipurpose

Leather Jewelry Tray

Product Dimensions – Width: 5” and 8”, Height: 2”, Depth: 12”

Finish – Brown Mocha, White Caramel

Application – Earrings, Glasses, Multipurpose, Necklaces, Rings, Watches

Material – Ecological Leather

Price - \$



Rings



Earrings



Glasses



Watches



Necklaces



Jewelry Organizer

Product Dimensions – Height: 2”

Product Dimensions – Width: 15 3/8”, 15 7/8”, 21 3/8”, 21 7/8”, 27 3/8”, 27 7/8”

Product Dimensions – Depth: 12 1/8”, 12 5/8”

Finish – Black

Material – Wood and Velvet

Price - \$



Velvet-Lined Jewelry Tray

Product Dimensions – Width: 22”, 28”; Height: 2”; Depth: 12 11/16”

Finish – Black, Blue

Application - Jewelry

Material – Velvet

Price - \$



Jewelry Drawer Standard Insert

Product Dimensions – Width: 22”, Height: 1 1/2”, Depth: 13”

Finish – Black

Application - Jewelry

Material – Wood and Velvet

Price - \$

CLOSET AND STORAGE SOLUTIONS



Jewelry Compartments

Product Dimensions – Width: 22", 28"; Height: 2",
Depth: 12 11/16"

Finish – Black, Blue

Application - Jewelry

Material – Acrylic

Price - \$



Jewelry Drawer

Product Dimensions – Width: 30"; Height: 2 3/4"

Interior Dimensions Required – Width: 30" to 32 1/2"

Interior Dimensions Required – Depth: 18 3/4"

Finish – Mocha

Application - Jewelry

Price - \$



Jewelry Drawer Necklace Insert

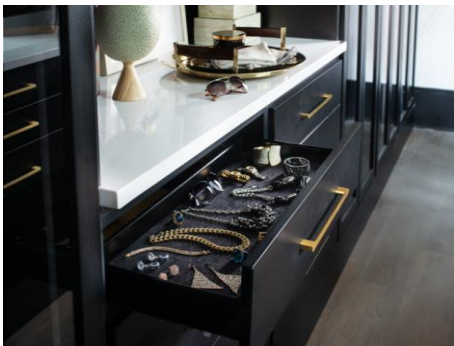
Product Dimensions – Width: 22", Height: 1 1/2", Depth: 13"

Finish – Black

Application - Jewelry

Material – Wood and Velvet

Price - \$



Black Undermount Jewelry Drawer

Product Dimensions – Width: 18", 24", 30"; Height: 3 1/8";
Depth: 14"

Interior Dimensions Required – Width – With frame: 18", 24", 30"

Interior Dimensions Required – Width – Frameless: 18", 24", 30"

Interior Dimensions Required – Height : 3 1/4"

Interior Dimensions Required – Depth – Frameless: 14 1/4"

Interior Dimensions Required – Depth – With Frame: 14"

Finish – Black

Application – Jewelry

Weight Capacity – 90 lb, with Soft-close

Material – Wood and Steel

Price - \$

CLOSET AND STORAGE SOLUTIONS



Black Velvet Ring Organizer

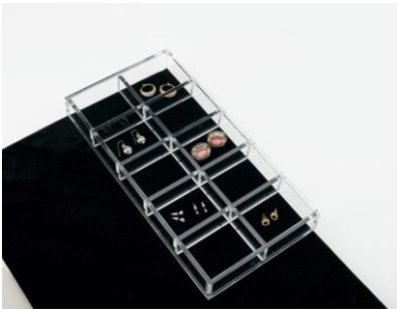
Product Dimensions – Width: 11 5/8”; Height: 1 ¼”, Depth: 4 ¼”

Finish – Black

Application - Jewelry

Material – Wood and Velvet

Price - \$



Earring Divider

Product Dimensions – Width: 11 5/8”; Depth: 6”

Finish – Clear

Application - Jewelry

Price - \$



Suspended Jewelry Tray

Product Dimensions – Width: 12 13/16”; Height : 1 3/8”; Depth: 6 ½”

Finish – Black

Material – Acrylic

Application - Jewelry

Price - \$



Jewelry Drawer

Product Dimensions – Width: 30”; Height : 2 ¼”; Depth: 14”

Finish – Gray, Walnut

Material – Wood and Velvet

Application - Jewelry

Price - \$



Jewelry Divider

Product Dimensions – Width: 11 5/8”; Height : 1 ¼”; Depth: 4 ¼”

Finish – Clear

Application - Jewelry

Price - \$

CLOSET AND STORAGE SOLUTIONS



Pull out Wire Basket

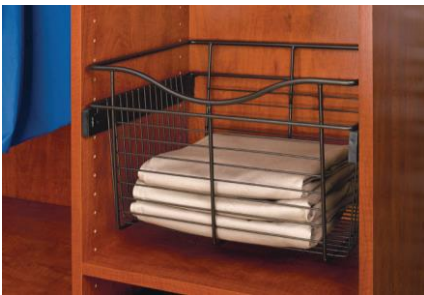
Product Dimensions – Width: 18”, 24”, 30”; Height: 7”, 11”, 18”;
Depth: 14”, 16”

Finish – Satin Nickel

Material – Metal

Application – Sweaters and T-shirts, Socks, Underwear and Gloves

Price - \$



Pull out Wire Basket

Product Dimensions – Width: 18”, 24”, 30”; Height: 7”, 11”, 18”;
Depth: 14”

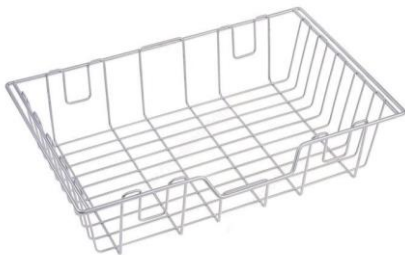
Finish – Oil-Rubbed Bronze

Material – Metal

Load Capacity – 100 lb

Application – Sweaters and T-shirts, Socks, Underwear and Gloves

Price - \$



Retractable Basket

Product Dimensions – Width: 18”, 24”, 30”; Height: 5 5/8”, 10”;
Depth: 14”

Finish – Silver

Material – Metal

Application – Sweaters and T-shirts, Socks, Underwear and Gloves

Price - \$



Pull out Wire Drawer

Product Dimensions – Width: 564 mm, 764 mm; Height: 156 mm;
Depth: 510 mm

Interior Dimensions required – Width: 570 mm, 770 mm

Finish – Chrome

Material – Wire

Load Capacity – 25 kg

Application – Sweaters and T-shirts, Socks, Underwear and Gloves

Price - \$



Pull out fabric basket

Product Dimensions – Width: 24”, 30”; Height: 11”, 19”; Depth: 14”

Finish – Cream

Material – Fabric

Application – Sweaters and T-shirts, Socks, Underwear, Gloves and Dirty Laundry

Price - \$

CLOSET AND STORAGE SOLUTIONS



Scarves Pull out Rack

Product Dimensions – Width: 3 1/16"; Height: 1 3/4"; Depth: 13 3/4"

Finish – Chrome, Matte Black, Matte Nickel, Satin Brass

Material – Aluminium

Application – Scarves

Price - \$



Sliding Scarf Rack

Product Dimensions – Width: 1 3/4"; Height: 4 1/8"; Depth: 13 3/4"

Finish – Chrome

Interior Dimensions Required – Width – Frameless: Min. 1 25/32"

Interior Dimensions Required – Depth – Frameless: Min. 14"

Interior Dimensions Required – Width – With Frame: Min. 1 25/32"

Interior Dimensions Required – Depth – With Frame: Max. 13 25/32"

Material – Steel

Application – Scarves

Price - \$



Shoe Rail

Product Dimensions – Width: 17", 23", 29", 35"; Height: 2 1/4"

Finish – Chrome, Oil-Rubbed Bronze, Satin Nickel

Material – Metal

Application – Shoes

Price - \$



Shoe Rails

Product Dimensions – Width: 17", 23", 29"; Height: 1 1/2";
Depth: 11/16"

Finish – Chrome, Matte Black, Matte Nickel, Satin Brass

Material – Aluminium

Application – Shoes

Price - \$



Shoe Rack

Product Dimensions – Width: 24", 30"; Height: 6 5/8"; Depth: 14"

Finish – Silver

Material – Metal

Application – Shoes

Price - \$

CLOSET AND STORAGE SOLUTIONS



Sliding Shoe Rack

Product Dimensions – Width: 764 mm; Height: 180 mm;
Depth: 475 mm

Finish – Brown

Interior Dimensions Required – Width – 764 mm

Interior Dimensions Required – Height – 220 mm

Interior Dimensions Required – Depth – 475 mm

Material – Aluminium

Price - \$



Adjustable Shoe Rack

Product Dimensions – Width: 23 15/16"; Depth: 13 3/4"

Finish – Clear Acrylic

Material – Acrylic

Price - \$



Shoe Support

Interior Dimensions Required – Width – 36"

Interior Dimensions Required – Height – 6"

Interior Dimensions Required – Depth – Min. 21 3/4"

Finish – Aluminium, Bronze

Material – Metal

Capacity – 8 pairs of shoes

Price - \$



Sliding Support

Product Dimensions – Width: 764 mm; Depth: 475 mm

Finish – Mocha

Interior Dimensions Required – Width – 764 to 814 mm

Interior Dimensions Required – Depth – 475 mm

Material – Aluminium

Price - \$



Sliding Storage

Product Dimensions – Width: 567 mm; Height: 85 mm;
Depth: 270 mm

Finish – Dark Gray

Material – Wire Basket

Price - \$

CLOSET AND STORAGE SOLUTIONS



Tie Pull out Rack

Product Dimensions – Width: 2 ½”; Height: 1 ¾”; Depth: 13 ¾”

Finish – Chrome, Matte Black, Matte Nickel, Satin Brass

Material – Aluminium

Application - Ties

Price - \$



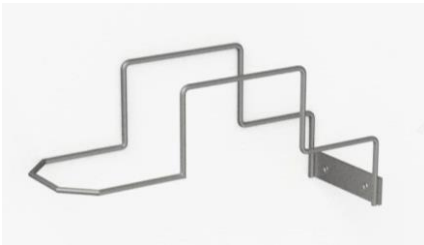
Vertical Partition

Product Dimensions – Width: 12”, 14”; Height: 5”, 8”

Finish – Clear

Material – Acrylic

Price - \$



Hat Support

Product Dimensions – Length: 5 ¾”, 6 5/8”; Height: 3 ½”, 5 5/8”

Finish – Silver

Price - \$



Sidelines sliding Wardrobe Mirror

Product Dimensions – Width: 2”; Height: 24”, 48”; Depth: 13 ¾”

Finish – Oil-Rubbed Bronze, Silver

Interior Dimensions Required – Width – Min. 8”

Interior Dimensions Required – Height – Min. 24”, Min. 48”

Interior Dimensions Required – Depth – 14”

Material – Metal

Price - \$



Sidelines three - Panel Wardrobe Mirror

Product Dimensions – Width: 26”; Height: 48”

Finish – Silver

Interior Dimensions Required – Width – Frameless: Min. 8”

Interior Dimensions Required – Width – With Frame: Min. 8”

Interior Dimensions Required – Depth – Frameless: Min. 14”

Interior Dimensions Required – Depth – With Frame: Min. 13 13/32”

Material – Metal

Price - \$